

Encoder Switch

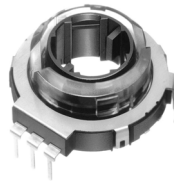
SSS-30MD, SSS-42MD, SSS-39MD, Series

Features

- ◇A hollow shaft type encoder.
- ◇Superb reliability by our own sliding contacts mechanism.
- ◇A good click feeling.
- ◇Please consult with us about the cap style beforehand.



SSS-30MD



SSS-42MD

Actual size



SSS-39MD

Applications

- ◇VTR FAX COPY CAR STEREO

Products Line

| No | Products No | Number of detent | Output code | Rotational torque | Recommended Thickness of P-C-B | Features |
|----|-------------|------------------|---------------------------|-------------------|--------------------------------|----------|
| 1 | SSS-30MD | 20 | 10 Pulse (Phase shift) | 7 +or- 3 mN-m | 1mm | LED type |
| 2 | SSS-42MD | | | | 1mm | |
| 3 | SSS-39MD | 16 | 16 Pulse (Phase shift) | 5 +or- 2 mN-m | 1mm | |

Typical Specifications

| Item | Specifications |
|------------------------------|--|
| Ratings(max)(Resistive load) | 10mA 5V DC |
| Operating life | 50,000 cycles |
| Operating temperature range | -10 +or- 2 to 60 +or- 2 degree Celsius |
| Storage temperature range | -20 +or- 2 to 70 +or- 2 degree Celsius |

